



COVID-19 in Germany - Situation Update and Communication Principles

T. Schneider

Robert Koch Institute (RKI)

Department for Infectious Disease Epidemiology

Unit for Crisis Management, Outbreak Investigations and

Training Programmes, Focal Point for the Public Health

Service (Unit 38)

Kick-off euPrevent (SHE) - 28.01.2021





COVID-19 in Germany





Background country information

Germany = democratic, federal parliamentary republic

Around 83 million inhabitants

16 federal states

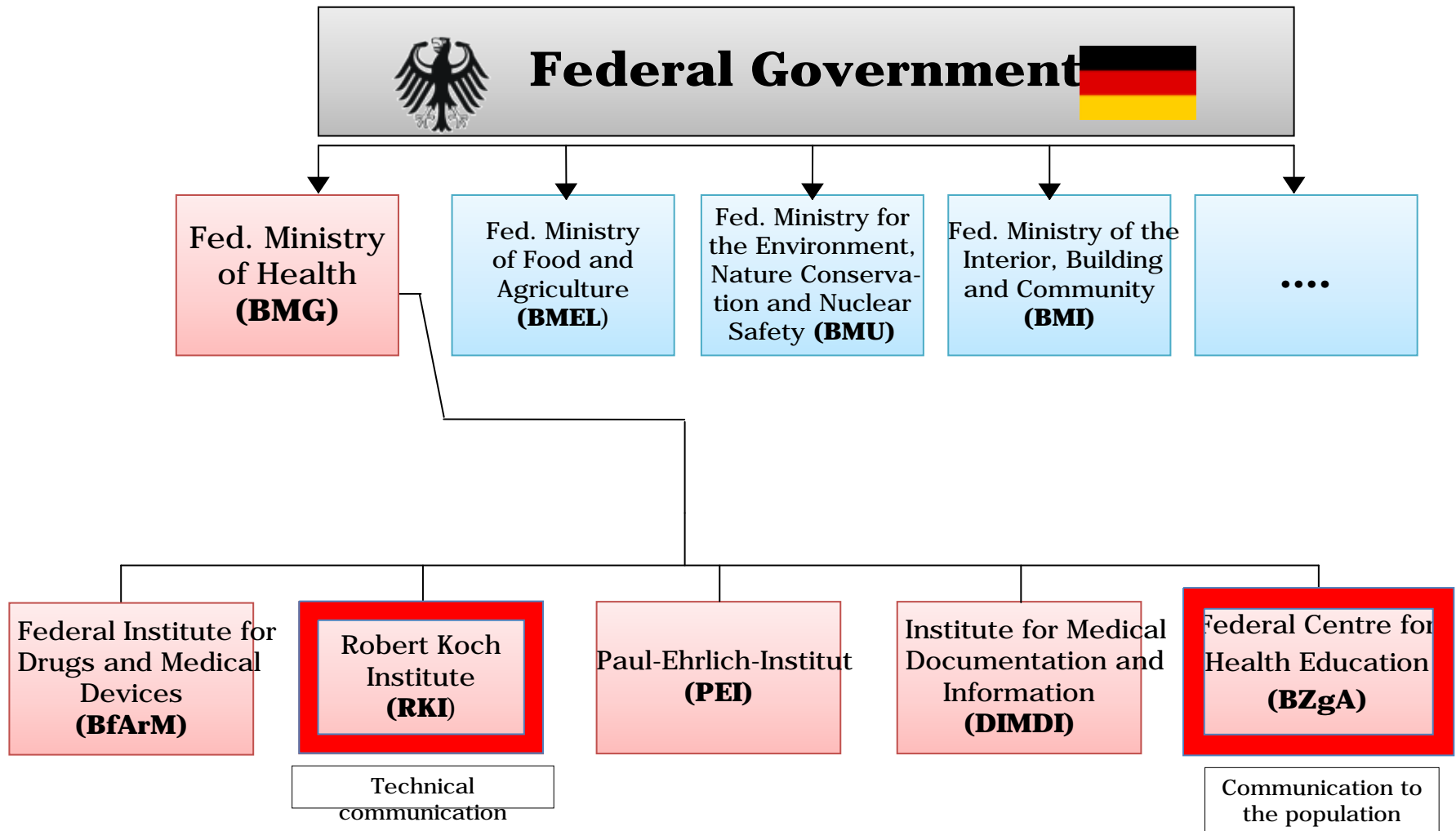
Federal states further divided into rural (n= 294) and urban districts (n= 107)

- > Authorities on the **local level responsible for** (p
- > **Federal level** = primarily **advisory function**





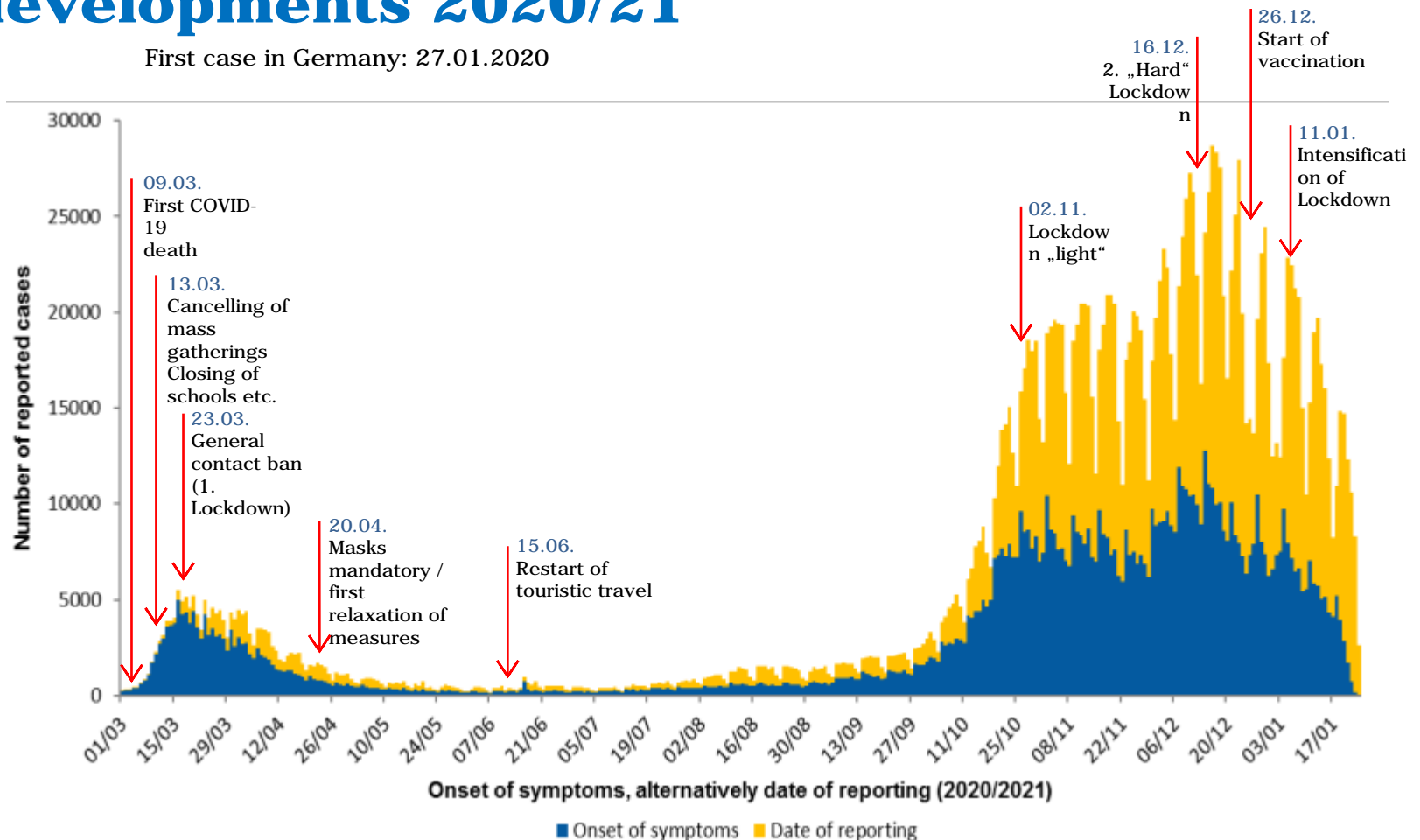
Federal health authorities





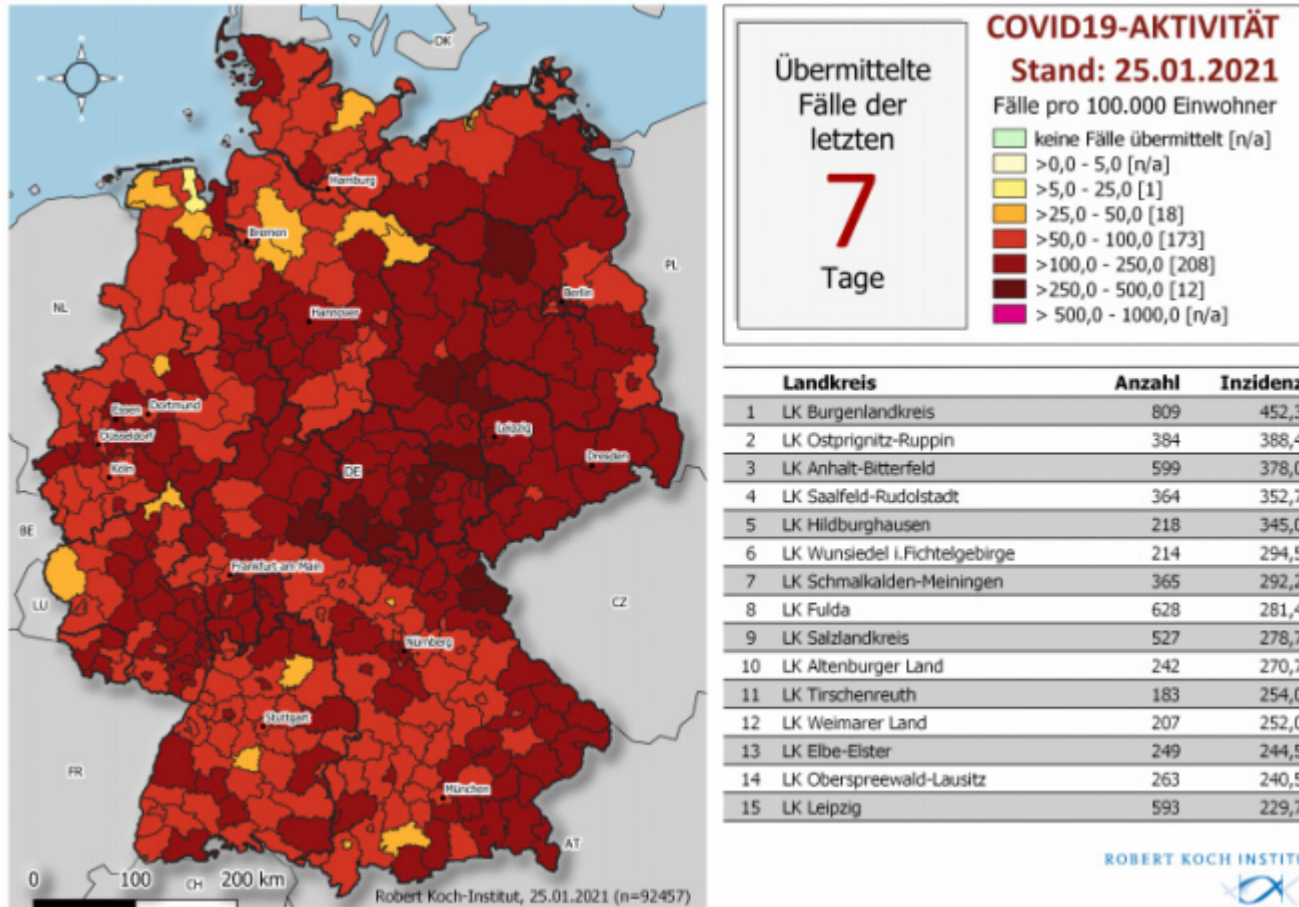
COVID-19 pandemic in Germany – major developments 2020/21

First case in Germany: 27.01.2020





COVID-19 pandemic in Germany – present situation





COVID-19 pandemic in Germany – present situation

Confirmed cases		7-day incidence (7-di)			Vaccination monitoring	DIVI-Intensive care register
Total¹	Active cases ²	Total population		No. of districts with 7-di > 50/100,000 pop	No. of vaccinations reported in last 24h ⁴	Change to previous day for cases currently in ICU
+6.729	-9,500	111		+ 4	+ 35,023 1 st vaccination	-9
(2,141,665)	[ca. 266,100]	cases/ 100,000 pop		[393/412]	+ 26,025 2 nd vaccination	[4,619]
Recovered³	Deaths	60-79 years	80+ years	No. of districts with 7-di > 100/100,000 pop	Total no. of vaccinated with one/two vaccine dose/s and share of population ⁴	Completed ICU treatment; thereof deceased [%]
+16,100	+ 217	87	235	+ 0	N1: 1,554,355 (1,9%)	+ 450
(ca. 1,823,500)	(52,087)	cases/ 100,000 pop		[220/412]	N2: 228,763	38%



National and International Communication





Communication: Reporting and Guidance

Daily Situation Reports (German / English)

Epidemiologic data (case numbers etc.)

IPC measures

Clinical case management

Testing strategy

Diagnostics

Contact tracing

International situation

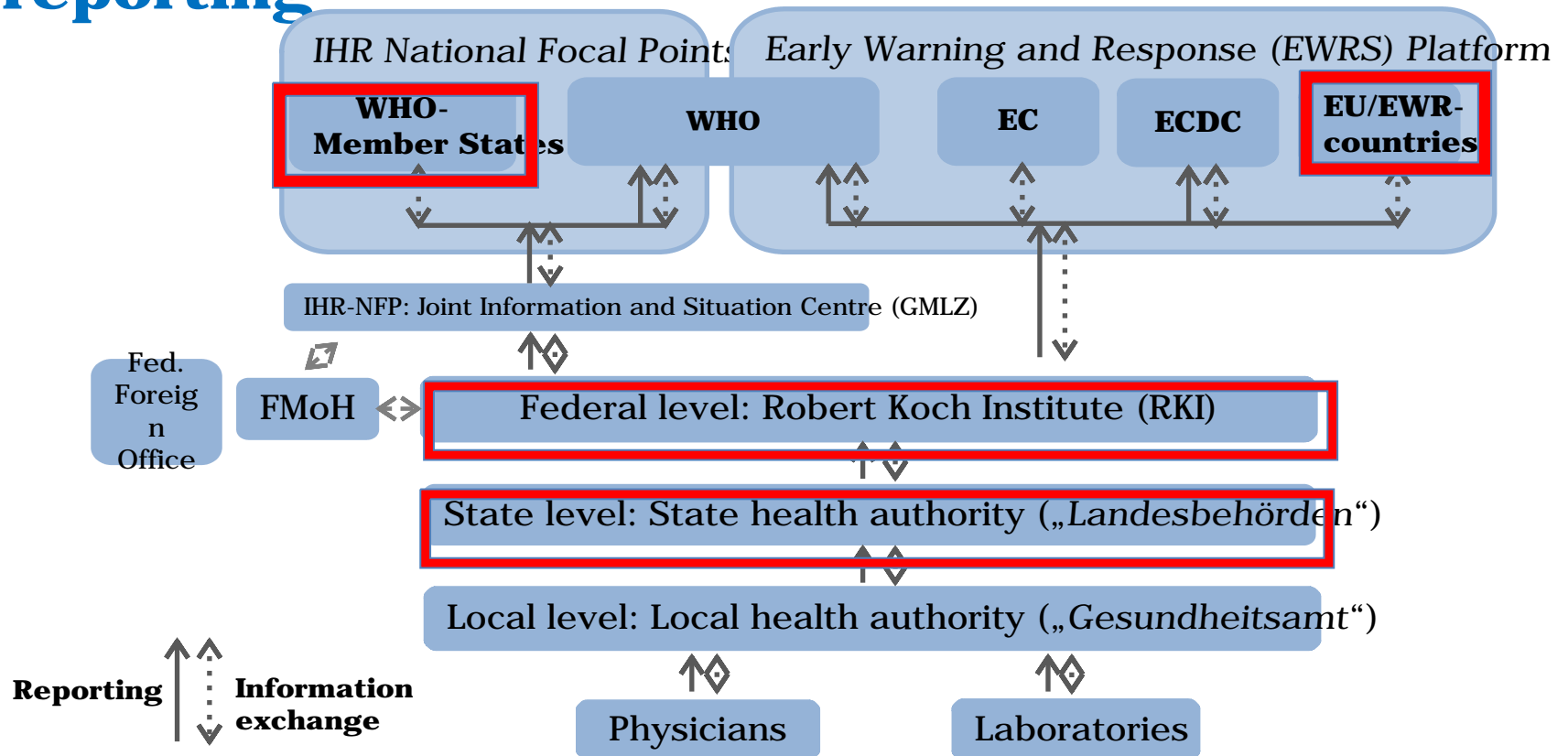
...

The screenshot shows the Robert Koch Institute website page for COVID-19. The page includes a navigation bar with links for 'Institut', 'Gesundheitsmonitoring', 'Infektionsschutz', 'Forschung', 'Kommissionen', and 'Service'. A search bar is located in the top right corner. The main content area features a central image of the COVID-19 virus and a list of links for more information, including 'Antworten auf häufig gestellte Fragen (FAQ) (22.1.2021)', 'Dashboard mit täglich aktualisierten Fallzahlen nach Bundesland und Landkreis', 'Steckbrief zu Erreger und Krankheit (25.1.2021)', and 'Übersicht und Empfehlungen zu neuen SARS-CoV-2-Virusvarianten (25.1.2021)'. The page also includes a sidebar with 'Infektionskrankheiten A-Z' and 'Gesundheit A-Z' dropdown menus, and a 'Neu' section with a link to 'Handlungsanleitung für Labore zur Auswahl von SARS-CoV-2-positiven Proben für die Sequenzierung (22.1.2021)'.

https://www.rki.de/DE/Content/InfAZ/N/Neuartiges_Coronavirus/nCoV_no_de.html



Communication: Intern. contact tracing and reporting





Communication: Intern. contact tracing and reporting

National level (RKI) serves as an **information hub** for international communication

EU member states: **EWRS**

Non EU member states: **IHR National Focal Points**

Advantage: “Single Point of C





Communication: Intern. contact tracing and reporting

Advantages

Clear **responsibility** (national focal point)

Reliable contact **24/7**

Data **standard**

Encrypted transmission

Challenges

Awareness about communication channels

Awareness of (updated) regulations (multi-sectorial)

Risk for delay of transmission (compared to direct contact, e.g. local authority – foreign country)

So far no common **standard for data transmission** (except EWRS)



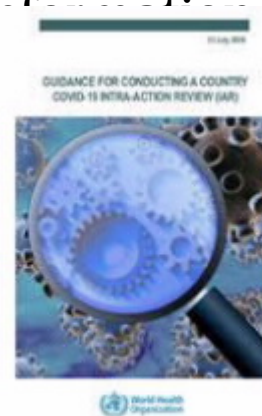
Communication: Intern. contact tracing and reporting

Outlook

Intra Action (IAR) and After Action Reviews (AAR)

Training on communication principles and data exchange (“ÖGD Kontaktstelle”)

Development of a unified data and information exchange platform (within the German public health sector)





Thank you for your attention!

Questions?

