

WHAT IS HEALTH IN ALL POLICIES?

Good health requires policies that actively support health



It requires different sectors working together, for example:



HEALTH



TRANSPORT



HOUSING



WORK



NUTRITION



WATER &
SANITATION

TO ENSURE ALL PEOPLE HAVE EQUAL OPPORTUNITIES TO ACHIEVE THE
HIGHEST LEVEL OF HEALTH

HOW DOES IT WORK?

Here is one example:
Worldwide

1 IN 8 DEATHS

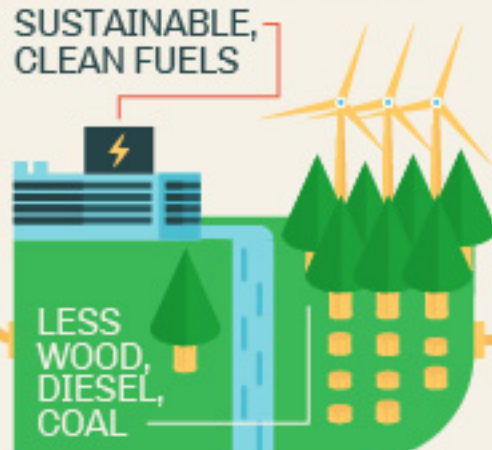
is linked to
air pollution exposure



TO TACKLE AIR POLLUTION COLLABORATION IS NEEDED

CLEAN ENERGY

SUSTAINABLE,
CLEAN FUELS

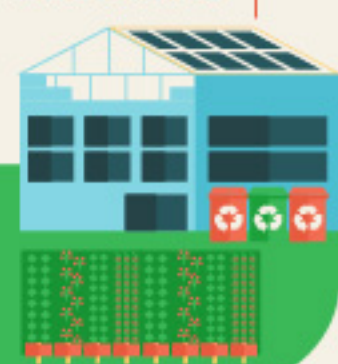


HOUSING

HEATING AND LIGHTING



CONSTRUCTION
STANDARDS



URBAN PLANNING

COMPACT AND EFFICIENT



TRANSPORT

LOW EMISSION
VEHICLES



INDUSTRY

REPLACE SMOKE STACKS



WASTE MANAGEMENT

EMISSION CONTROLS



LOCAL AND REGIONAL AUTHORITIES

PLANNING CODES



HEALTH MINISTRY

TRACK HEALTH IMPACT



The health sector drives
conversations within all
sectors to keep good
health at the top of
everyone's mind

